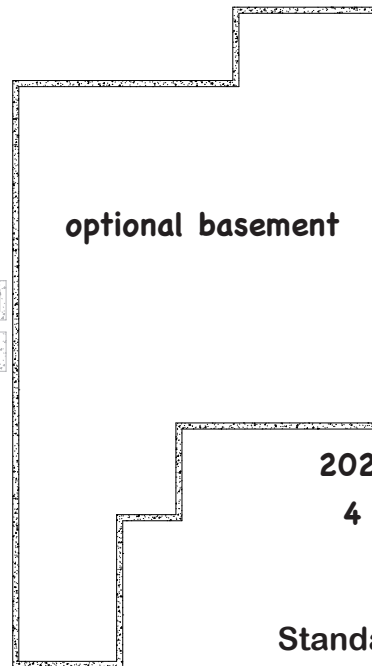
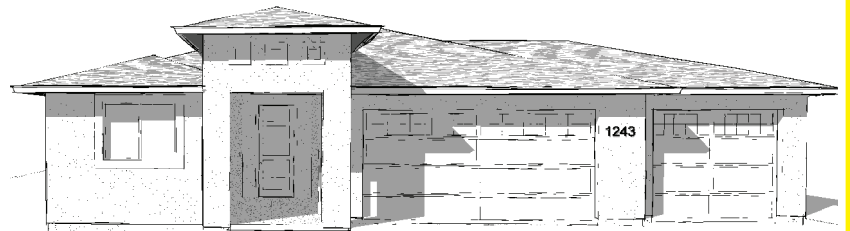
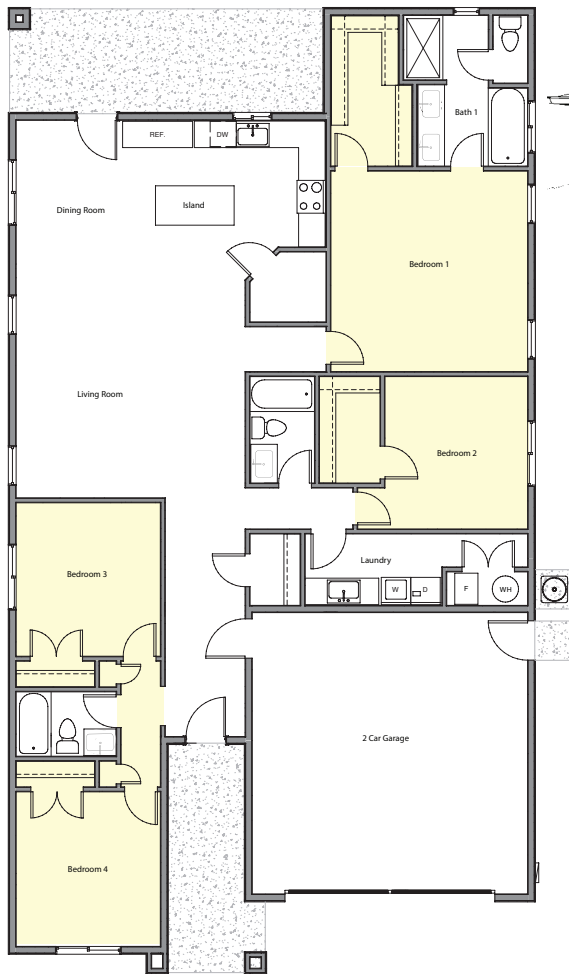




MERWIN HOMES 5



**2025 sf living space
4 bdrm / 3 bath**

Standard Features Include:

- * 3CM Granite
- * 9 ft ceilings
- * 8 ft front door
- * Moen Motion Sense
- * Kitchen Faucet
- * Single Bowl Kitchen Sink
- * Elongated Toilet Bowls
- * Rain Shower Head
- * Vented hood
- * Pot Filler
- * Gourmet Fridge
- * Rectangular Sinks
- * Waterproof Luxury Vinyl Plank Flooring
- * Ceramic Tile

Built by



MERWIN PROJECT MANAGEMENT LLC
NV LIC.# 0086069

illustrations are approximate and subject to change